

SCIENTIFIC BACKGROUND:

Purified eosinophilic crystals from bronchoalveolar lavage fluids of me^v/me^v and SHIP (SH2 containing inositol 5' phosphatase) knockout mice are composed of the protein Ym1 (also called T-lymphocyte-derived eosinophil chemotactic factor (ECF-L)).^{1,2} In mice, eosinophilic crystals are often considered to be histologically identical to the Charcot-Leyden crystals in humans. Recently, Rauh *et al.* demonstrated that SHIP knockout mouse macrophages contain increased expression of Ym1 protein, consistent with the activated M2 phenotype seen in macrophage populations in these mice.²

SPECIFICITY:

This antibody reacts with mouse Ym1.

IMMUNOGEN:

This polyclonal antibody was generated against an 11 amino acid peptide corresponding to residues in mouse Ym1 and human acidic mammalian chitinase (AMCase).

FORMAT:

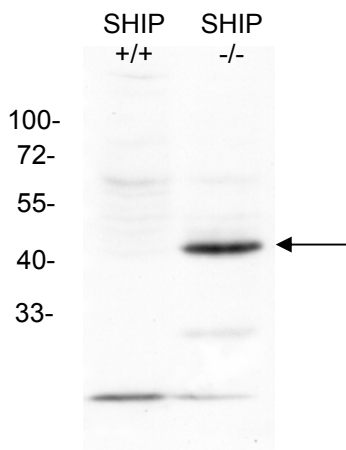
300 μ L of immunogen-affinity purified rabbit polyclonal antibody in 0.01% BSA, 0.05% sodium azide and 50% glycerol (pH 7.4). Liquid at -20°C.

STABILITY AND STORAGE:

Store at -20°C to -70°C. Stable at least 1 year without detectable loss of activity.


IMMUNOBLOT ANALYSIS:

Representative Western Blot of mouse peritoneal macrophage (PM Φ) total cell lysates (3×10^5 cells) from normal (+/+) and SHIP knockout (-/-) mice resolved by SDS-PAGE and probed with anti-Ym1 (1:1000 dilution). Proteins were visualized using goat anti-rabbit secondary antibody conjugated to horseradish peroxidase (HRP) and a chemiluminescent detection system. Arrow indicates Ym1 (45 kDa).



Product Information Sheet

ANTIBODIES


Version 1.0.1

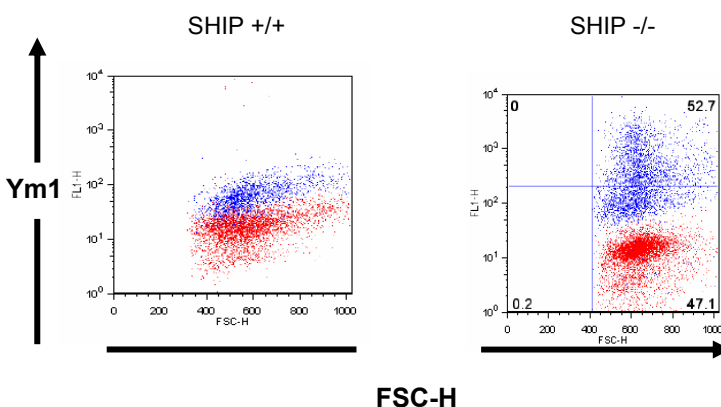
ANTI-Ym1
Affinity Purified Rabbit
Polyclonal Antibody

Catalog #01404 300 μ L

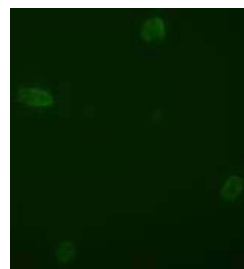
IMMUNOFLUORESCENCE ANALYSIS:

FACS:

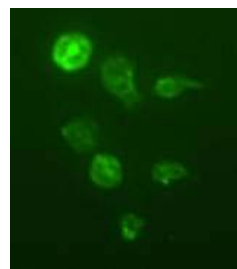
PM Φ s from normal and SHIP knockout mice were fixed, permeabilized (FIX&PERM, Caltag, Burlingame, CA) and labelled with isotype control (red) or 1/50 anti-Ym1 antibody (blue), followed by anti-rabbit AlexaFluor488 (Molecular Probes, Eugene, OR).



Immunofluorescence Microscopy:



SHIP +/+



SHIP -/-

Monocytes purified from SHIP +/+ and SHIP -/- bone marrow were stained with 1/25 anti-Ym1 antibody followed by anti-rabbit AlexaFluor488 (Molecular Probes, Eugene, OR).

StemCell Technologies

In North America
Tel: 1.604.877.0713
Fax: 1.604.877.0704
Toll Free Tel: 1.800.667.0322
Toll Free Fax: 1.800.567.2899
e-mail: info@stemcell.com
www.stemcell.com

In the United Kingdom
Tel: +44.(0).20.7537.7565
Fax: +44.(0).20.7515.5408
Toll Free within United Kingdom:
Tel: 0800.731.27.14
Fax: 0800.731.27.13
e-mail: info@stemcellgb.com

In Europe
Tel: +33.(0).4.76.04.75.30
Fax: +33.(0).4.76.18.99.63
e-mail: info@stemcellfrance.com

Revised:
February 2006

APPLICATIONS AND DIRECTIONS FOR USE:

Centrifuge tube briefly before use to ensure recovery of entire contents.

Western Blot:

This antibody can be used at a 1 in 1000 dilution with the appropriate secondary reagents to detect mouse Ym1.

Immunofluorescence:

This antibody can be used at a 1 in 50 dilution with the appropriate secondary reagents to detect mouse Ym1.

REFERENCES:

1. Guo, L *et al.* J. Biol. Chem., 275:8032-8037, 2000.
2. Rauh, M *et al.* Immunity, 23:361-374, 2005.

**THIS REAGENT IS FOR RESEARCH USE ONLY.
IT IS NOT TO BE ADMINISTERED TO HUMANS.**

Hazardous Ingredient: Sodium Azide. Avoid exposure to skin and eyes, ingestion, and contact with heat, acids and metals.

Wash exposed skin with soap and water. Flush eyes with water. Dilute with running water before discharging into plumbing.

StemCell Technologies

In North America

Tel: 1.604.877.0713
Fax: 1.604.877.0704
Toll Free Tel: 1.800.667.0322
Toll Free Fax: 1.800.567.2899
e-mail: info@stemcell.com
www.stemcell.com

In the United Kingdom

Tel: +44.(0).20.7537.7565
Fax: +44.(0).20.7515.5408
Toll Free within United Kingdom:
Tel: 0800.731.27.14
Fax: 0800.731.27.13
e-mail: info@stemcellgb.com

In Europe

Tel: +33.(0).4.76.04.75.30
Fax: +33.(0).4.76.18.99.63
e-mail: info@stemcellfrance.com

*Revised:
February 2006*