



## EasySep™ Mouse Naïve CD8+ T Cell Isolation Kit

Negative Selection

Catalog #19858

For processing 1 x 10<sup>9</sup> cells



Scientists Helping Scientists™ | [WWW.STEMCELL.COM](http://WWW.STEMCELL.COM)

TOLL FREE PHONE 1 800 667 0322 • PHONE +1 604 877 0713

INFO@STEMCELL.COM • TECHSUPPORT@STEMCELL.COM

FOR GLOBAL CONTACT DETAILS VISIT OUR WEBSITE

Document #29287 | Version 1\_0\_1

## Description

Isolate untouched and highly purified naïve CD8+ T cells (CD3+CD8+CD44-CD62L+) from mouse splenocytes by immunomagnetic negative selection. When using single-cell suspensions from other tissue types, this kit may require optimization.

- Fast and easy-to-use
- Up to 98% purity
- No columns required
- Untouched, viable cells

This kit targets non-naïve CD8+ T cells for removal with biotinylated antibodies recognizing specific cell surface markers. Unwanted cells are labeled with biotinylated antibodies and streptavidin-coated magnetic particles, and separated without columns using an EasySep™ magnet. Desired cells are simply poured off into a new tube. Isolated cells are immediately available for downstream applications such as flow cytometry, culture and cell-based experiments.

## Component Descriptions

COMPONENT NAME	COMPONENT #	QUANTITY	STORAGE	SHELF LIFE	FORMAT
EasySep™ Mouse Naïve CD8+ T Cell Isolation Cocktail	19858C	1 x 0.5 mL	Store at 2 - 8°C. Do not freeze.	Stable until expiry date (EXP) on label.	A combination of monoclonal antibodies in PBS and 0.1% BSA.
EasySep™ Streptavidin RapidSpheres™ 50001	50001	1 x 1 mL	Store at 2 - 8°C. Do not freeze.	Stable until expiry date (EXP) on label.	A suspension of magnetic particles in PBS.
Normal Rat Serum	13551	1 x 2 mL	Store at -20°C.	Stable until expiry date (EXP) on label.	Mycoplasma-free normal rat serum.

BSA - bovine serum albumin; PBS - phosphate-buffered saline

Components may be shipped at room temperature (15 - 25°C) but should be stored as indicated above.

## Additional Reagent Stability Information

REAGENT NAME	STORAGE	SHELF LIFE
Normal Rat Serum (in-use)	Store at 2 - 8°C.	Stable for at least 2 months. Do not exceed expiry date (EXP) on label.

## Sample Preparation

### SPLEEN

Disrupt spleen in PBS (Catalog #37350) or Hanks' Balanced Salt Solution (HBSS; Catalog #37250) containing 2% fetal bovine serum (FBS). Remove clumps and debris by passing cell suspension through a 70 µm mesh nylon strainer. Centrifuge at 300 x g for 10 minutes and resuspend at 1 x 10<sup>8</sup> nucleated cells/mL in recommended medium.

Ammonium chloride treatment is not recommended when preparing the cells for separation.



## Recommended Medium

EasySep™ Buffer (Catalog #20144), RoboSep™ Buffer (Catalog #20104), or PBS containing 2% FBS and 1 mM EDTA. HBSS, Modified (without Ca++ and Mg++) can be used in place of PBS. Medium should be free of Ca++, Mg++, and biotin.

## Directions for Use – Manual EasySep™ Protocols

See page 1 for Sample Preparation and Recommended Medium. Refer to Tables 1 and 2 for detailed instructions regarding the EasySep™ procedure for each magnet.


**Table 1. EasySep™ Mouse Naïve CD8+ T Cell Isolation Kit Protocol**

		EASYSEP™ MAGNETS	
STEP	INSTRUCTIONS	 <b>EasySep™</b> (Catalog #18000)	<b>“The Big Easy”</b> (Catalog #18001) 
1	Prepare sample at the indicated cell concentration within the volume range.	1 x 10 <sup>8</sup> cells/mL 0.25 - 2 mL	1 x 10 <sup>8</sup> cells/mL 0.5 - 8.5 mL
2	Add Rat Serum to sample.	50 µL/mL of sample	50 µL/mL of sample
3	Add sample to required tube.	5 mL (12 x 75 mm) polystyrene round-bottom tube (e.g. Corning Catalog #352058)	14 mL (17 x 100 mm) polystyrene round-bottom tube (e.g. Corning Catalog #352057)
4	Add Isolation Cocktail to sample.	50 µL/mL of sample	50 µL/mL of sample
	Mix and incubate.	RT for 10 minutes	RT for 10 minutes
5	Vortex RapidSpheres™.	30 seconds	30 seconds
6	Add RapidSpheres™ to sample.	100 µL/mL of sample	100 µL/mL of sample
	Mix and incubate.	RT for 5 minutes	RT for 5 minutes
7	Add recommended medium to top up the sample to the indicated volume. Mix by gently pipetting up and down 2 - 3 times.	Top up to 2.5 mL	<ul style="list-style-type: none"> <li>• Top up to 5 mL for samples &lt; 4 mL</li> <li>• Top up to 10 mL for samples ≥ 4 mL</li> </ul>
	Place the tube (without lid) into the magnet and incubate.	RT for 2.5 minutes	RT for 2.5 minutes
8	Pick up the magnet, and in one continuous motion invert the magnet and tube,* pouring off the enriched cell suspension into a new tube.	Isolated cells are now ready for use	Isolated cells are now ready for use

RT - room temperature (15 - 25°C)

\* Leave the magnet and tube inverted for 2 - 3 seconds, then return upright. Do not shake or blot off any drops that may remain hanging from the mouth of the tube.

**Table 2. EasySep™ Mouse Naïve CD8+ T Cell Isolation Kit Protocol**


		EASYSEP™ MAGNET	
STEP	INSTRUCTIONS	EasyPlate™ (Catalog #18102)	
1	Prepare sample at the indicated cell concentration within the volume range.	1 x 10 <sup>8</sup> cells/mL 0.05 - 0.2 mL	
2	Add Rat Serum to sample.	50 µL/mL of sample	
3	Add sample to required tube.	Round bottom, non-tissue culture-treated 96-well plate (e.g. Costar Catalog #3788 or Corning Catalog #351177)	
4	Add Isolation Cocktail to sample.	50 µL/mL of sample	
	Mix and incubate.	RT for 10 minutes	
5	Vortex RapidSpheres™.	30 seconds	
6	Add RapidSpheres™ to sample.	100 µL/mL of sample	
	Mix and incubate.	RT for 5 minutes	
7	Add recommended medium to top up sample to the indicated volume. Mix by gently pipetting up and down 2 - 3 times.	Top up to 0.25 mL	
	Place the plate (without lid) into the magnet and incubate.	RT for 2.5 minutes	
8	Carefully pipette (do not pour) the enriched cell suspension into a new plate.	Isolated cells are ready for use	

RT - room temperature (15 - 25°C)

## Directions for Use – Fully Automated RoboSep™ Protocol

See page 1 for Sample Preparation and Recommended Medium. Refer to Table 3 for detailed instructions regarding the RoboSep™ procedure.

**Table 3. RoboSep™ Mouse Naïve CD8+ T Cell Isolation Protocol**

STEP	INSTRUCTIONS	RoboSep™ (Catalog #20000 and #21000)	
1	Prepare sample at the indicated cell concentration within the volume range.*	1 x 10 <sup>8</sup> cells/mL 1 - 8.5 mL	
2	Add Rat Serum to sample.	50 µL/mL of sample	
3	Add sample to required tube.	14 mL (17 x 100 mm) polystyrene round-bottom tube (e.g. Corning Catalog #352057)	
4	Select protocol.	Mouse Naïve CD8+ T Cell Isolation 19858	
5	Vortex RapidSpheres™.	30 seconds	
6	Load the carousel.	Follow on-screen prompts	
	Start the protocol.	Press the green "Run" button	
7	Unload the carousel when the run is complete.	Isolated cells are now ready for use	

\* For start sample volumes between 0.5 - < 1 mL, resuspend the cells to a final volume of 1 mL in recommended medium.

## Notes and Tips

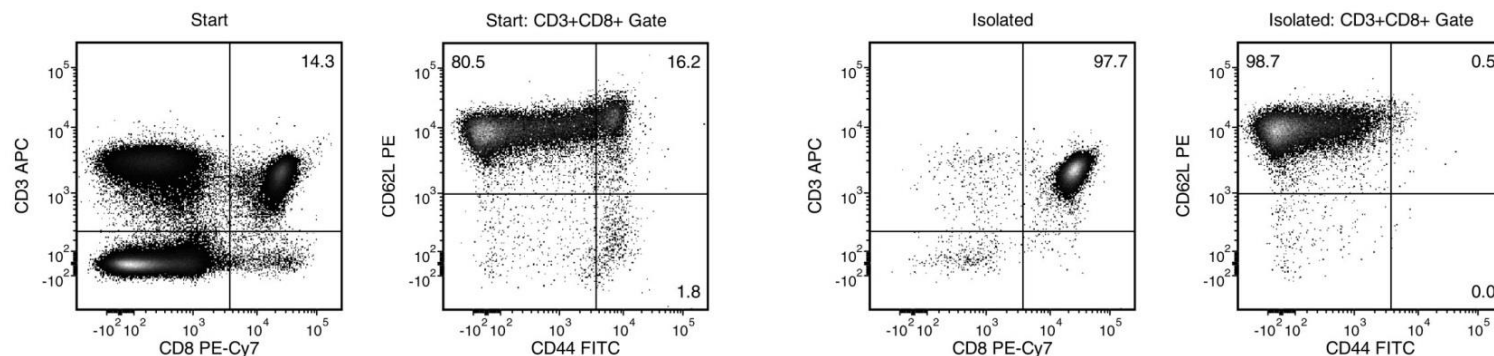
### ASSESSING PURITY

For purity assessment of naïve CD8+ T cells (CD3+CD8+CD44-CD62L+) by flow cytometry use the following fluorochrome-conjugated antibody clones:

- Anti-Mouse CD3e Antibody, Clone 145-2C11 (Catalog #60015), and
- Anti-Mouse CD8a Antibody, Clone 53-6.7 (Catalog #60023), and
- Anti-Mouse CD62L (L-Selectin) Antibody, Clone MEL-14 (Catalog #60109), and
- Anti-mouse CD44 antibody, clone 5035-41.1D

The anti-mouse CD44 (Ly-24) clone 5035-41.1D is not blocked by the anti-CD44 clone used in the Mouse Naïve CD8+ T Cell Isolation Cocktail. The 5035-41.1D clone only recognizes the Ly-24.2 isoform which is expressed by C57BL/6, C57BL/10, C57/L, C58A, AKR, 129, SJL, NZB, C3H, CE, CBA/H mouse strains. The anti-mouse/human CD44 clone IM7 is blocked by the anti-mouse CD44 antibody used in the Mouse Naïve CD8+ T Cell Isolation Cocktail and cannot be used to assess purity.

## Data



Starting with splenocytes from an uninfected mouse, the naïve CD8+ T cell content (CD3+CD8+CD44-CD62L+) of the isolated fraction typically ranges from 92 - 98%. In the above example, the purities of the start and final isolated fractions are 11.5% and 96.4%, respectively.

STEMCELL TECHNOLOGIES INC.'S QUALITY MANAGEMENT SYSTEM IS CERTIFIED TO ISO 13485. PRODUCTS ARE FOR RESEARCH USE ONLY AND NOT INTENDED FOR HUMAN OR ANIMAL DIAGNOSTIC OR THERAPEUTIC USES UNLESS OTHERWISE STATED.

Copyright © 2015 by STEMCELL Technologies Inc. All rights reserved including graphics and images. STEMCELL Technologies & Design, STEMCELL Shield Design, Scientists Helping Scientists, EasyPlate, EasySep, RapidSpheres, and RoboSep are trademarks of STEMCELL Technologies Inc. All other trademarks are the property of their respective holders. While STEMCELL has made all reasonable efforts to ensure that the information provided by STEMCELL and its suppliers is correct, it makes no warranties or representations as to the accuracy or completeness of such information.