

## Anti-Human CD11b Antibody, Clone ICRF44



Scientists Helping Scientists™ | [WWW.STEMCELL.COM](http://WWW.STEMCELL.COM)

TOLL FREE PHONE 1 800 667 0322 • PHONE +1 604 877 0713

[INFO@STEMCELL.COM](mailto:INFO@STEMCELL.COM) • [TECHSUPPORT@STEMCELL.COM](mailto:TECHSUPPORT@STEMCELL.COM)

FOR GLOBAL CONTACT DETAILS VISIT OUR WEBSITE

## Antibodies

Mouse monoclonal IgG1 antibody  
against human, rhesus, cynomolgus  
CD11b, unconjugated

Catalog #60040

100 µg 0.5 mg/mL

FOR RESEARCH USE ONLY. NOT INTENDED FOR HUMAN OR ANIMAL DIAGNOSTIC OR THERAPEUTIC USES.

## Product Description

The ICRF44 antibody reacts with an extracellular epitope on CD11b (integrin  $\alpha$ M), an ~170 kDa type 1 transmembrane glycoprotein which associates non-covalently with CD18 to form the heterodimeric Mac-1 receptor. Through its interactions with ligands such as ICAM-1 (CD54), ICAM-2 (CD102), ICAM-4 (CD242), iC3b, heparin and fibrinogen, Mac-1 influences several processes, including the adherence of neutrophils and monocytes to stimulated endothelium, and phagocytosis of complement-coated particles. CD11b is expressed on the surface of granulocytes, monocytes, NK cells, dendritic cells, tissue macrophages and subsets of T and B cells, and has been used as a marker to distinguish naïve and memory CD8+ T cells. CD11b is a relatively late marker for myeloid differentiation and is undetectable on most myelomonocytic hematopoietic progenitor cells and more primitive cells. Certain mutations in CD11b give rise to the disorder systemic lupus erythematosus. The ICRF44 antibody reportedly inhibits leukocyte aggregation in response to the chemoattractant fMLP.

Target Antigen Name:	CD11b
Alternative Names:	C3bIR, CR3, Integrin $\alpha$ M chain, Mac-1, MAC1, Mo1
Gene ID:	3684
Species Reactivity:	Human, Rhesus, Cynomolgus, Baboon, Chimpanzee, Common Marmoset, Pig
Host Species:	Mouse
Clonality:	Monoclonal
Clone:	ICRF44
Isotype:	IgG1, kappa
Immunogen:	Human rheumatoid synovial cells and monocytes
Conjugate:	Unconjugated

## Applications

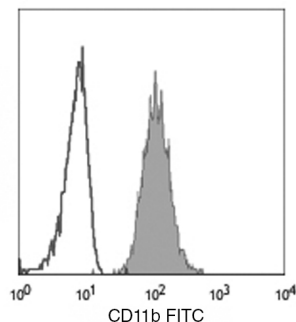
Verified:	CellSep, FC
Reported:	CyTOF®, FA, FC, ICC, IF, IHC, IP, WB
Special Applications:	This antibody clone has been verified for labeling human mesenchymal cells grown in MesenCult™ Proliferation Kit (Human; Catalog #05411) and MesenCult™-XF Medium (Catalog #05420).

Abbreviations: CellSep: Cell separation; ChIP: Chromatin immunoprecipitation; FA: Functional assay; FC: Flow cytometry; ICC: Immunocytochemistry; IF: Immunofluorescence microscopy; IHC: Immunohistochemistry; IP: Immunoprecipitation; WB: Western blotting

## Properties

Formulation:	Phosphate-buffered solution, pH 7.2, containing 0.09% sodium azide
Purification:	The antibody was purified by affinity chromatography.
Stability and Storage:	Product stable at 2 - 8°C when stored undiluted. Do not freeze. For product expiry date, please request a lot-specific Certificate of Analysis from <a href="mailto:techsupport@stemcell.com">techsupport@stemcell.com</a> .
Directions for Use:	For flow cytometry the suggested use of this antibody is $\leq 0.5$ µg per $1 \times 10^6$ cells in 100 µL volume. It is recommended that the antibody be titrated for optimal performance for each application.

## Data



Flow cytometry analysis of human peripheral blood granulocytes labeled with Anti-Human CD11b Antibody, Clone ICRF44, followed by anti-mouse IgG, FITC (filled histogram) or a mouse IgG1, kappa isotype control antibody followed by anti-mouse IgG, FITC (open histogram).

## Related Products

PRODUCT NAME	CATALOG #	SIZE
Anti-Human CD11b Antibody, Clone ICRF44	60040	100 µg
Anti-Human CD11b Antibody, Clone ICRF44, PE	60040PE	100 tests
Anti-Human CD11b Antibody, Clone ICRF44, PE	60040PE.1	25 tests
Anti-Human CD11b Antibody, Clone ICRF44, Alexa Fluor® 488	60040AD	100 tests
Anti-Human CD11b Antibody, Clone ICRF44, Alexa Fluor® 488	60040AD.1	25 tests

## References

1. Kishimoto T, et al. Eds. Leukocyte Typing VI. White Cell Differentiation Antigens. Garland Publishing Inc, New York, pp. 1117-18, 1998
2. Yoshino N, et al. Upgrading of flow cytometric analysis for absolute counts, cytokines and other antigenic molecules of cynomolgus monkeys (Macaca fascicularis) by using anti-human cross-reactive antibodies. Exp Anim 49(2): 97-110, 2000 (FC)
3. Jadhav S, et al. Hydrodynamic shear regulates the kinetics and receptor specificity of polymorphonuclear leukocyte-colon carcinoma cell adhesive interactions. Blood 167(10): 5986-93, 2001 (Blocking, FA)
4. Rezzonico R, et al. Ligation of CD11b and CD11c beta(2) integrins by antibodies or soluble CD23 induces macrophage inflammatory protein 1alpha (MIP-1alpha) and MIP-1beta production in primary human monocytes through a pathway dependent on nuclear factor-kappaB. Blood 97(10): 2932-40, 2001 (Blocking, FA)
5. David A, et al. Interaction of proteinase 3 with CD11b/CD18 (beta2 integrin) on the cell membrane of human neutrophils. J Leukoc Biol 74(4): 551-57, 2003 (IF)
6. Marsik C, et al. Regulation of Fas (APO-1, CD95) and Fas ligand expression in leukocytes during systemic inflammation in humans. Shock 20(6): 493-96, 2003 (Blocking, FA)
7. Sengoku K, et al. Integrins are not involved in the process of human sperm-oolemmal fusion. Hum Reprod 19(3): 639-44, 2004 (ICC, IF)
8. Sotiriou SN, et al. Lipoprotein(a) in atherosclerotic plaques recruits inflammatory cells through interaction with Mac-1 integrin. FASEB J 20(3): 559-61, 2006 (IHC)
9. Moreau A, et al. Tolerogenic dendritic cells actively inhibit T cells through heme oxygenase-1 in rodents and in nonhuman primates. FASEB J 23(9): 3070-77, 2009 (FC)
10. Charles N, et al. Basophils and the T helper 2 environment can promote the development of lupus nephritis. Nat Med 16(6): 701-07, 2010 (FC)

Copyright © 2013 by STEMCELL Technologies Inc. All rights reserved including graphics and images. STEMCELL Technologies & Design, STEMCELL Shield Design, Scientists Helping Scientists and MesenCult are trademarks of STEMCELL Technologies Inc. All other trademarks are the property of their respective holders. Alexa Fluor® is a registered trademark of Life Technologies Corporation. This product is licensed for internal research use only and its sale is expressly conditioned on the buyer not using it for manufacturing, performing a service, or medical test, or otherwise generating revenue. For use other than research, contact Life Technologies Corporation, 5791 Van Allen Way, Carlsbad, CA 92008 USA or outlicensing@lifetech.com.

STEMCELL TECHNOLOGIES INC.'S QUALITY MANAGEMENT SYSTEM IS CERTIFIED TO ISO 13485 MEDICAL DEVICE STANDARDS.