

Anti-Human CD38 Antibody, Clone HIT2

Antibodies

Mouse monoclonal IgG1 antibody
against human, chimpanzee, horse
CD38, unconjugated



Scientists Helping Scientists™ | WWW.STEMCELL.COM

TOLL FREE PHONE 1 800 667 0322 • PHONE +1 604 877 0713

INFO@STEMCELL.COM • TECHSUPPORT@STEMCELL.COM

FOR GLOBAL CONTACT DETAILS VISIT OUR WEBSITE

Catalog #60014

100 µg 0.5 mg/mL

FOR RESEARCH USE ONLY. NOT INTENDED FOR HUMAN OR ANIMAL DIAGNOSTIC OR THERAPEUTIC USES.

Product Description

The HIT2 antibody reacts with CD38, an ~45 kDa type II transmembrane glycoprotein expressed by many cell types, especially leukocytes. CD38 is an ectoenzyme (ADP-ribosyl hydrolase) with both cyclase and hydrolase activities, whereby it mediates lymphocyte activation, adhesion and metabolism. CD31 is a known ligand for the receptor. In humans, CD38 is expressed by the majority of hematopoietic cells at levels which vary according to the differentiation and activation status of the cells. It is highly expressed on activated T and B cells and plasma cells, and is also found at high levels in several tissues, including brain, kidney, liver, ovary, pancreas, placenta, testis, and some types of cancerous tissue.

Target Antigen Name:	CD38
Alternative Names:	ADP-ribosyl cyclase, T10
Gene ID:	952
Species Reactivity:	Human, Chimpanzee, Horse
Host Species:	Mouse
Clonality:	Monoclonal
Clone:	HIT2
Isotype:	IgG1, kappa
Immunogen:	Human fetal thymocytes
Conjugate:	Unconjugated

Applications

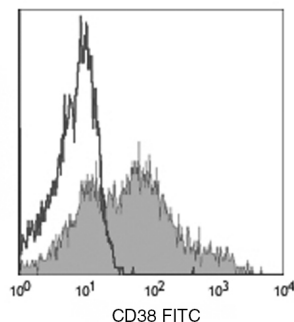
Verified:	FC
Reported:	CyTOF®, FC, IHC, WB
Special Applications:	This antibody clone has been verified for purity assessments of cells isolated with EasySep™ kits, including EasySep™ Human CD138 Positive Selection Kit (Catalog #18357) and EasySep™ Human Whole Blood CD138 Positive Selection Kit (Catalog #18387).

Abbreviations: CellSep: Cell separation; ChIP: Chromatin immunoprecipitation; FA: Functional assay; FC: Flow cytometry; ICC: Immunocytochemistry; IF: Immunofluorescence microscopy; IHC: Immunohistochemistry; IP: Immunoprecipitation; WB: Western blotting

Properties

Formulation:	Phosphate-buffered solution, pH 7.2, containing 0.09% sodium azide
Purification:	The antibody was purified by affinity chromatography.
Stability and Storage:	Product stable at 2 - 8°C when stored undiluted. Do not freeze. For product expiry date, please request a lot-specific Certificate of Analysis from techsupport@stemcell.com .
Directions for Use:	For flow cytometry the suggested use of this antibody is ≤ 2.0 µg per 1 x 10 ⁶ cells in 100 µL volume. It is recommended that the antibody be titrated for optimal performance for each application.

Data



Flow cytometry analysis of human peripheral blood lymphocytes labeled with Anti-Human CD38 Antibody, Clone HIT2, followed by anti-mouse IgG, FITC (filled histogram) or a mouse IgG1, kappa isotype control antibody followed by anti-mouse IgG, FITC (open histogram).

Related Products

PRODUCT NAME	CATALOG #	SIZE
Anti-Human CD38 Antibody, Clone HIT2	60014	100 µg
Anti-Human CD38 Antibody, Clone HIT2, PE	60014PE	100 tests
Anti-Human CD38 Antibody, Clone HIT2, PE	60014PE.1	25 tests
Anti-Human CD38 Antibody, Clone HIT2, Alexa Fluor® 488	60014AD	100 tests
Anti-Human CD38 Antibody, Clone HIT2, Alexa Fluor® 488	60014AD.1	25 tests

References

1. McMichael AJ, et al. Eds. Leucocyte Typing III: White Cell Differentiation Antigens. Oxford University Press, New York, pp. 417-19, 1987
2. Alessio M, et al. CD38 molecule: structural and biochemical analysis on human T lymphocytes, thymocytes, and plasma cells. J Immunol 145(3): 878-84, 1990
3. Mizuguchi M, et al. Neuronal localization of CD38 antigen in the human brain. Brain Res 697(1-2): 235-40, 1995
4. Joshua D, et al. The labelling index of primitive plasma cells determines the clinical behaviour of patients with myelomatosis. Br J Haematol 94(1): 76-81, 1996
5. van der Voort R, et al. Paracrine regulation of germinal center B cell adhesion through the c-met-hepatocyte growth factor/scatter factor pathway. J Exp Med 185(12): 2121-31, 1997 (IHC)
6. Deaglio S, et al. Human CD38 (ADP-ribosyl cyclase) is a counter-receptor of CD31, an Ig superfamily member. J Immunol 160(1): 395-402, 1998
7. Horenstein AL, et al. CD38 binding to human myeloid cells is mediated by mouse and human CD31. Biochem J 330(Pt 3): 1129-35, 1998
8. Jeannin P, et al. Human effector memory T cells express CD86: a functional role in naive T cell priming. J Immunol 162(4): 2044-48, 1999
9. Yoshino N, et al. Upgrading of flow cytometric analysis for absolute counts, cytokines and other antigenic molecules of cynomolgus monkeys (Macaca fascicularis) by using anti-human cross-reactive antibodies. Exp Anim 49(2): 97-110, 2000 (FC)
10. Bende RJ, et al. Primary follicular lymphoma of the small intestine: alpha4beta7 expression and immunoglobulin configuration suggest an origin from local antigen-experienced B cells. Am J Pathol 162(1): 105-13, 2003
11. Lin G, et al. Cross-reactivity of CD antibodies in eight animal species. In: Mason D, et al., Eds. Leucocyte Typing VII. Oxford University Press, Oxford, pp. 519-24, 2002
12. Lehner M, et al. Plasticity of dendritic cell function in response to prostaglandin E2 (PGE2) and interferon-gamma (IFN-gamma). J Leukoc Biol 83(4): 883-93, 2008

Copyright © 2013 by STEMCELL Technologies Inc. All rights reserved including graphics and images. STEMCELL Technologies & Design, STEMCELL Shield Design, Scientists Helping Scientists and EasySep are trademarks of STEMCELL Technologies Inc. All other trademarks are the property of their respective holders. Alexa Fluor® is a registered trademark of Life Technologies Corporation. This product is licensed for internal research use only and its sale is expressly conditioned on the buyer not using it for manufacturing, performing a service, or medical test, or otherwise generating revenue. For use other than research, contact Life Technologies Corporation, 5791 Van Allen Way, Carlsbad, CA 92008 USA or outlicensing@lifetech.com.

STEMCELL TECHNOLOGIES INC.'S QUALITY MANAGEMENT SYSTEM IS CERTIFIED TO ISO 13485 MEDICAL DEVICE STANDARDS.