

**Anti-Human CD11b Antibody,  
Clone ICRF44, Alexa Fluor® 488**



Scientists Helping Scientists™ | [WWW.STEMCELL.COM](http://WWW.STEMCELL.COM)

T. +1 604 877 0713 • TOLL-FREE T. 1 800 667 0322

[ORDERS@STEMCELL.COM](mailto:ORDERS@STEMCELL.COM) • [TECHSUPPORT@STEMCELL.COM](mailto:TECHSUPPORT@STEMCELL.COM)

FOR GLOBAL CONTACT DETAILS VISIT OUR WEBSITE

## Antibodies

Mouse monoclonal IgG1 antibody  
against human, rhesus, cynomolgus  
CD11b, Alexa Fluor® 488-conjugated

Catalog #60040AD.1  
#60040AD

|           |           |
|-----------|-----------|
| 25 tests  | 5 µL/test |
| 100 tests | 5 µL/test |

FOR RESEARCH USE ONLY. NOT INTENDED FOR HUMAN OR ANIMAL DIAGNOSTIC OR THERAPEUTIC USES.

## Product Description

The ICRF44 antibody reacts with an extracellular epitope on CD11b (integrin  $\alpha$ M), an ~170 kDa type 1 transmembrane glycoprotein which associates non-covalently with CD18 to form the heterodimeric Mac-1 receptor. Through its interactions with ligands such as ICAM-1 (CD54), ICAM-2 (CD102), ICAM-4 (CD242), iC3b, heparin and fibrinogen, Mac-1 influences several processes, including the adherence of neutrophils and monocytes to stimulated endothelium, and phagocytosis of complement-coated particles. CD11b is expressed on the surface of granulocytes, monocytes, NK cells, dendritic cells, tissue macrophages and subsets of T and B cells, and has been used as a marker to distinguish naive and memory CD8+ T cells. CD11b is a relatively late marker for myeloid differentiation and is undetectable on most myelomonocytic hematopoietic progenitor cells and more primitive cells. Certain mutations in CD11b give rise to the disorder systemic lupus erythematosus. The ICRF44 antibody reportedly inhibits leukocyte aggregation in response to the chemoattractant fMLP.

|                      |   |
|----------------------|---|
| Target Antigen Name: | CD11b   |
| Alternative Names:   | C3bIR, CR3, Integrin $\alpha$ M chain, Mac-1, Mo1                   |
| Gene ID:             | 3684  |
| Species Reactivity:  | Human, Rhesus, Cynomolgus, Baboon, Chimpanzee, Common Marmoset, Pig |
| Host Species:        | Mouse   |
| Clonality:           | Monoclonal  |
| Clone:               | ICRF44  |
| Isotype:             | IgG1, kappa   |
| Immunogen:           | Human rheumatoid synovial cells and monocytes                       |
| Conjugate:           | Alexa Fluor® 488  |

## Applications

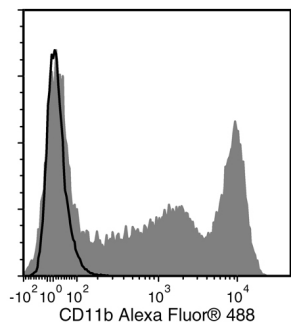
|                       |   |
|-----------------------|---|
| Verified:             | FC  |
| Reported:             | FC  |
| Special Applications: | This antibody clone has been verified for labeling human mesenchymal cells grown in MesenCult™ Proliferation Kit (Human; Catalog #05411) and MesenCult™-XF Medium (Catalog #05420). |

Abbreviations: CellSep: Cell separation; ChIP: Chromatin immunoprecipitation; FA: Functional assay; FC: Flow cytometry; ICC: Immunocytochemistry; IF: Immunofluorescence microscopy; IHC: Immunohistochemistry; IP: Immunoprecipitation; WB: Western blotting

## Properties

|                        |  |
|------------------------|--|
| Formulation:           | Phosphate-buffered solution, pH 7.2, containing 0.09% sodium azide and 0.2% (w/v) bovine serum albumin   |
| Purification:          | The antibody was purified by affinity chromatography and conjugated with Alexa Fluor® 488 under optimal conditions. The solution is free of unconjugated Alexa Fluor® 488.   |
| Stability and Storage: | Product stable at 2 - 8°C when stored undiluted. Do not freeze. Protect product from prolonged exposure to light. For product expiry date, please request a lot-specific Certificate of Analysis from <a href="mailto:techsupport@stemcell.com">techsupport@stemcell.com</a> . |
| Directions for Use:    | For flow cytometry the suggested use of this antibody is 5 µL per 1 x 10 <sup>6</sup> cells in 100 µL volume or per 100 µL of whole blood. It is recommended that the antibody be titrated for optimal performance for each application.                                       |

Data



Flow cytometry analysis of human peripheral blood mononuclear cells (PBMCs) labeled with Anti-Human CD11b Antibody, Clone ICRF44, Alexa Fluor® 488 (filled histogram) or a mouse IgG1, kappa Alexa Fluor® 488 isotype control antibody (solid line histogram).

Related Products

| PRODUCT NAME  | CATALOG # | SIZE        |
|---|-----------|-------------|
| Anti-Human CD11b Antibody, Clone ICRF44                   | 60040     | Coming soon |
| Anti-Human CD11b Antibody, Clone ICRF44, PE               | 60040PE.1 | 25 tests    |
| Anti-Human CD11b Antibody, Clone ICRF44, PE               | 60040PE   | 100 tests   |
| Anti-Human CD11b Antibody, Clone ICRF44, Alexa Fluor® 488 | 60040AD.1 | 25 tests    |
| Anti-Human CD11b Antibody, Clone ICRF44, Alexa Fluor® 488 | 60040AD   | 100 tests   |

References

1. Kishimoto T, et al. Eds. Leukocyte Typing VI. White Cell Differentiation Antigens. Garland Publishing Inc, New York, pp. 1117-18, 1998

2. Yoshino N, et al. Upgrading of flow cytometric analysis for absolute counts, cytokines and other antigenic molecules of cynomolgus monkeys (*Macaca fascicularis*) by using anti-human cross-reactive antibodies. *Exp Anim* 49(2): 97-110, 2000 (FC)

3. Jadhav S, et al. Hydrodynamic shear regulates the kinetics and receptor specificity of polymorphonuclear leukocyte-colon carcinoma cell adhesive interactions. *Blood* 167(10): 5986-93, 2001 (Blocking, FA)

4. Rezzonico R, et al. Ligation of CD11b and CD11c beta(2) integrins by antibodies or soluble CD23 induces macrophage inflammatory protein 1alpha (MIP-1alpha) and MIP-1beta production in primary human monocytes through a pathway dependent on nuclear factor-kappaB. *Blood* 97(10): 2932-40, 2001 (Blocking, FA)

5. David A, et al. Interaction of proteinase 3 with CD11b/CD18 (beta2 integrin) on the cell membrane of human neutrophils. *J Leukoc Biol* 74(4): 551-57, 2003 (IF)

6. Marsik C, et al. Regulation of Fas (APO-1, CD95) and Fas ligand expression in leukocytes during systemic inflammation in humans. *Shock* 20(6): 493-96, 2003 (Blocking, FA)

7. Sengoku K, et al. Integrins are not involved in the process of human sperm-oolemmal fusion. *Hum Reprod* 19(3): 639-44, 2004 (ICC, IF)

8. Sotiriou SN, et al. Lipoprotein(a) in atherosclerotic plaques recruits inflammatory cells through interaction with Mac-1 integrin. *FASEB J* 20(3): 559-61, 2006 (IHC)

9. Moreau A, et al. Tolerogenic dendritic cells actively inhibit T cells through heme oxygenase-1 in rodents and in nonhuman primates. *FASEB J* 23(9): 3070-77, 2009 (FC)

10. Charles N, et al. Basophils and the T helper 2 environment can promote the development of lupus nephritis. *Nat Med* 16(6): 701-07, 2010 (FC)

Alexa Fluor® is a registered trademark of Life Technologies Corporation. This product is licensed for internal research use only and its sale is expressly conditioned on the buyer not using it for manufacturing, performing a service, or medical test, or otherwise generating revenue. For use other than research, contact Life Technologies Corporation, 5791 Van Allen Way, Carlsbad, CA 92008 USA or [outlicensing@lifetech.com](mailto:outlicensing@lifetech.com).