

## Anti-Human SSEA-5 Antibody, Clone 8e11, FITC

# Antibodies

Mouse monoclonal IgG1 antibody  
against human SSEA-5, FITC-  
conjugated

Catalog #60063FI

100 Tests 5 µL/test



Scientists Helping Scientists™ | [WWW.STEMCELL.COM](http://WWW.STEMCELL.COM)

TOLL FREE PHONE 1 800 667 0322 • PHONE +1 604 877 0713

[INFO@STEMCELL.COM](mailto:INFO@STEMCELL.COM) • [TECHSUPPORT@STEMCELL.COM](mailto:TECHSUPPORT@STEMCELL.COM)

FOR GLOBAL CONTACT DETAILS VISIT OUR WEBSITE

## Product Description

This mouse monoclonal antibody (clone 8e11, FITC-conjugated) reacts with human stage-specific embryonic antigen-5 (SSEA-5). SSEA-5 is a terminal H type-1 glycan (Fuc1-2Galβ1-3GlcNAcβ1) expressed on the surface of cells in the inner cell mass of the human blastocyst during embryogenesis, and on undifferentiated human embryonic stem (ES) and induced pluripotent stem (iPS) cells. Expression of SSEA-5 is rapidly down-regulated upon cellular differentiation. The 8e11 antibody can be used in conjunction with other pluripotency surface markers such as CD9 and CD90, or CD50 and CD200, to sort and remove undifferentiated teratoma-forming cells from incompletely differentiated stem cell cultures.

Target Antigen Name:	SSEA-5
Alternative Names:	Stage-specific embryonic antigen-5
Gene ID:	Not applicable
Species Reactivity:	Human
Host Species:	Mouse
Clonality:	Monoclonal
Clone:	8e11
Isotype:	IgG1, kappa
Immunogen:	Undifferentiated H9 human embryonic stem cells
Conjugate:	FITC (Fluorescein isothiocyanate)

## Applications

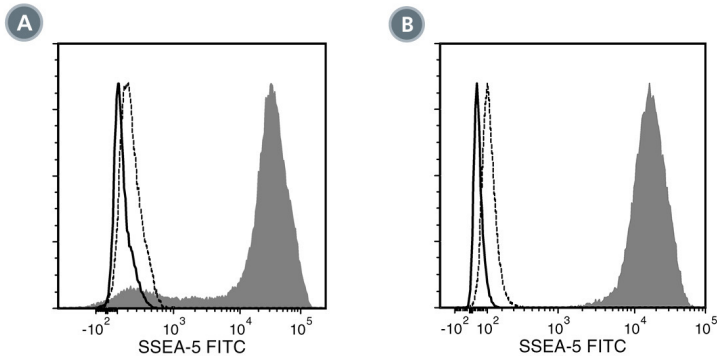
Verified:	FC
Reported:	FC
Special Applications:	This antibody clone has been verified for labeling human ES and iPS cells grown in TeSR™-E8™ (Catalog #05940) and mTeSR™1 (Catalog #85850).

Abbreviations: CellSep: Cell separation; ChIP: Chromatin immunoprecipitation; FA: Functional assay; FACS: Fluorescence-activated cell sorting; FC: Flow cytometry; ICC: Immunocytochemistry; IF: Immunofluorescence microscopy; IHC: Immunohistochemistry; IP: Immunoprecipitation; RIA: Radioimmunoassay; WB: Western blotting

## Properties

Formulation:	Phosphate-buffered solution, pH 7.2, containing 0.09% sodium azide and 0.2% (w/v) bovine serum albumin
Purification:	The antibody was purified by affinity chromatography and conjugated with FITC under optimal conditions. The solution is free of unconjugated FITC.
Stability and Storage:	Product stable at 2 - 8°C when stored undiluted. Do not freeze. Protect product from prolonged exposure to light. For product expiry date, please contact <a href="mailto:techsupport@stemcell.com">techsupport@stemcell.com</a> .
Directions for Use:	For flow cytometry, the suggested use of this antibody is 5 µL per 1 × 10 <sup>6</sup> cells in 100 µL. It is recommended that the antibody be titrated for optimal performance for each application.

## Data



(A) Flow cytometry analysis of human ES cells (filled histogram) or HT1080 fibrosarcoma cells (negative control; dashed line histogram) labeled with Anti-Human SSEA-5 Antibody, Clone 8e11, FITC. Labeling of human ES cells with a mouse IgG1, kappa FITC isotype control antibody is shown (solid line histogram).

(B) Flow cytometry analysis of human iPS cells (filled histogram) or HT1080 fibrosarcoma cells (negative control; dashed line histogram) labeled with Anti-Human SSEA-5 Antibody, Clone 8e11, FITC. Labeling of human iPS cells with a mouse IgG1, kappa FITC isotype control antibody is shown (solid line histogram).

## Related Products

For a complete list of antibodies, including other conjugates, sizes and clones, as well as related products available from STEMCELL Technologies, please visit [www.stemcell.com/antibodies](http://www.stemcell.com/antibodies), or contact us at [techsupport@stemcell.com](mailto:techsupport@stemcell.com).

## References

1. Andrews PW. (2011) Toward safer regenerative medicine. *Nat Biotechnol* 29(9): 803–5.
2. Itskovitz-Eldor J. (2011) A panel of glycan cell surface markers define pluripotency state and promote safer cell-based therapies. *Cell Stem Cell* 9(4): 291–2.
3. Tang C et al. (2011) An antibody against SSEA-5 glycan on human pluripotent stem cells enables removal of teratoma-forming cells. *Nat Biotechnol* 29(9): 829–34. (Depletion, FC, IF, IHC, IP)

PRODUCTS ARE FOR RESEARCH USE ONLY AND NOT INTENDED FOR HUMAN OR ANIMAL DIAGNOSTIC OR THERAPEUTIC USES UNLESS OTHERWISE STATED.

Copyright © 2023 by STEMCELL Technologies Inc. All rights reserved including graphics and images. STEMCELL Technologies & Design, STEMCELL Shield Design, Scientists Helping Scientists, and EasySep are trademarks of STEMCELL Technologies Canada Inc. E8, TeSR, and mTeSR are trademarks of WARF. All other trademarks are the property of their respective holders. While STEMCELL has made all reasonable efforts to ensure that the information provided by STEMCELL and its suppliers is correct, it makes no warranties or representations as to the accuracy or completeness of such information.