

EasySep™ Mouse CD49b Positive Selection Kit

For processing 2×10^9 cells

Catalog #18755
#18755RF RoboSep™

Positive Selection

Document #1000000816 | Version 01



Scientists Helping Scientists™ | WWW.STEMCELL.COM

TOLL FREE PHONE 1 800 667 0322 • PHONE +1 604 877 0713
INFO@STEMCELL.COM • TECHSUPPORT@STEMCELL.COM
FOR GLOBAL CONTACT DETAILS VISIT OUR WEBSITE

Description

Isolate highly purified CD49b+ cells from mouse splenocytes or other single-cell suspensions by immunomagnetic positive selection. When using single-cell suspensions from other tissue types, this kit may require optimization.

- Fast and easy-to-use
- Up to 90% purity
- No columns required

This kit targets CD49b+ cells for positive selection with an antibody recognizing the CD49b surface marker. Desired cells are labeled with antibodies and magnetic particles and separated without columns using an EasySep™ magnet. Unwanted cells are simply poured off, while desired cells remain in the tube. Isolated cells are immediately available for downstream applications, such as flow cytometry, culture, or DNA/RNA extraction.

Component Descriptions

COMPONENT NAME	COMPONENT #	QUANTITY	STORAGE	SHELF LIFE	FORMAT
EasySep™ Mouse CD49b PE Labeling Reagent	18755C.1	1 x 1 mL	Store at 2 - 8°C. Do not freeze.	Stable until expiry date (EXP) on label.	A combination of monoclonal antibodies in PBS, 0.1% BSA and < 0.1% sodium azide. Includes an Fc receptor blocking antibody.
EasySep™ PE Selection Cocktail	18154	2 x 1 mL	Store at 2 - 8°C. Do not freeze.	Stable until expiry date (EXP) on label.	A combination of monoclonal antibodies in PBS and 0.1% BSA.
EasySep™ Dextran RapidSpheres™ 50100	50100	1 x 1 mL	Store at 2 - 8°C. Do not freeze.	Stable until expiry date (EXP) on label.	A suspension of magnetic particles in water.

BSA - bovine serum albumin; PBS - phosphate-buffered saline

Components may be shipped at room temperature (15 - 25°C) but should be stored as indicated above.

Sample Preparation

For automated and standardized tissue processing, see STEMprep™ Tissue Dissociator (Catalog #100-2112) at www.stemcell.com/stemprep. For manual processing, follow the steps below.

SPLEEN

Disrupt spleen in PBS or Hanks' Balanced Salt Solution containing 2% fetal bovine serum (FBS). Remove aggregates and debris by passing cell suspension through a 70 µm mesh nylon strainer (e.g. Catalog #27215). Centrifuge at 300 x g for 10 minutes and resuspend at 1×10^8 nucleated cells/mL in recommended medium.

Ammonium chloride treatment is not recommended when preparing the cells for separation.



Recommended Medium

EasySep™ Buffer (Catalog #20144), RoboSep™ Buffer (Catalog #20104), or PBS containing 2% FBS and 1 mM EDTA. Medium should be free of Ca++ and Mg++.

Directions for Use – Manual EasySep™ Protocols

See page 1 for Sample Preparation and Recommended Medium. Refer to Table 1 for detailed instructions regarding the EasySep™ procedure for each magnet.

Table 1. EasySep™ Mouse CD49b Positive Selection Kit Protocol

		EASYSEP™ MAGNETS	
STEP	INSTRUCTIONS	 EasySep™ (Catalog #18000)	 “The Big Easy” (Catalog #18001)
1	Prepare sample at the indicated cell concentration within the volume range.	1 x 10 ⁸ cells/mL 0.25 - 2.5 mL NOTE: If starting with fewer than 2.5 x 10 ⁷ cells, resuspend cells in 0.25 mL	1 x 10 ⁸ cells/mL 0.5 - 8.5 mL NOTE: If starting with fewer than 5 x 10 ⁷ cells, resuspend cells in 0.5 mL
	Add sample to required tube.	5 mL (12 x 75 mm) polystyrene round-bottom tube (e.g. Catalog #38007)	14 mL (17 x 95 mm) polystyrene round-bottom tube (e.g. Catalog #38008)
2	Add PE Labeling Reagent to sample.	50 µL/mL of sample	50 µL/mL of sample
	Mix and incubate.	RT for 15 minutes	RT for 15 minutes
3	Add Selection Cocktail to sample. NOTE: Do not vortex cocktail.	100 µL/mL of sample	100 µL/mL of sample
	Mix and incubate.	RT for 15 minutes	RT for 15 minutes
4	Vortex RapidSpheres™. NOTE: Particles should appear evenly dispersed.	30 seconds	30 seconds
5	Add RapidSpheres™ to sample.	50 µL/mL of sample	50 µL/mL of sample
	Mix and incubate.	RT for 10 minutes	RT for 10 minutes
6	Add recommended medium to top up the sample to the indicated volume. Mix by gently pipetting up and down 2 - 3 times.	Top up to 2.5 mL	<ul style="list-style-type: none"> • Top up to 5 mL for samples < 3 mL • Top up to 10 mL for samples ≥ 3 mL
	Place the tube (without lid) into the magnet and incubate.	RT for 5 minutes	RT for 5 minutes
7	Pick up the magnet, and in one continuous motion invert the magnet and tube,* pouring off the supernatant. Remove the tube from the magnet; this tube contains the isolated cells.	Discard supernatant	Discard supernatant
8	Repeat steps as indicated.	Steps 6 and 7, two more times (total of 3 x 5-minute separations)	Steps 6 and 7, two more times (total of 3 x 5-minute separations)
9	Resuspend cells in desired medium. Be sure to collect cells from the sides of the tube.	Isolated cells are ready for use	Isolated cells are ready for use
OPTIONAL ADDITIONAL SEPARATION for PURITY NOTE: This will improve purity but may reduce recovery.		---	---
10	Repeat steps as indicated.	Steps 6 and 7 (one additional 5-minute separation)	Steps 6 and 7 (one additional 5-minute separation)
11	Resuspend cells in desired medium. Be sure to collect cells from the sides of the tube.	Isolated cells are ready for use	Isolated cells are ready for use


RT - room temperature (15 - 25°C)

* Leave the magnet and tube inverted for 2 - 3 seconds, then return upright. Do not shake or blot off any drops that may remain hanging from the mouth of the tube.

Directions for Use – Fully Automated RoboSep™ Protocol

See page 1 for Sample Preparation and Recommended Medium. Refer to Table 2 for detailed instructions regarding the RoboSep™ procedure.

Table 2. RoboSep™ Mouse CD49b Positive Selection Kit Protocol

STEP	INSTRUCTIONS	RoboSep™ (Catalog #21000)	
1	Prepare sample at the indicated cell concentration within the volume range.	1 x 10 ⁸ cells/mL 0.25 - 8 mL NOTE: If starting with fewer than 2.5 x 10 ⁷ cells, resuspend cells in 0.25 mL	
	Add sample to required tube.	14 mL (17 x 95 mm) polystyrene round-bottom tube (e.g. Catalog #38008)	
2	Select protocol.	Mouse CD49b Positive Selection 18755-high purity	
3	Vortex RapidSpheres™. NOTE: Particles should appear evenly dispersed.	30 seconds	
4	Load the carousel.	Follow on-screen prompts	
	Start the protocol.	Press the green "Run" button	
5	Unload the carousel when the run is complete. Remove the tube containing the isolated cells and resuspend in desired medium. Be sure to collect cells from the sides of the tube.	Isolated cells are ready for use	

Notes and Tips

ASSESSING PURITY

The positively selected cells have already been PE (phycoerythrin)-labeled, so the purity can be assessed directly by flow cytometry.

Data

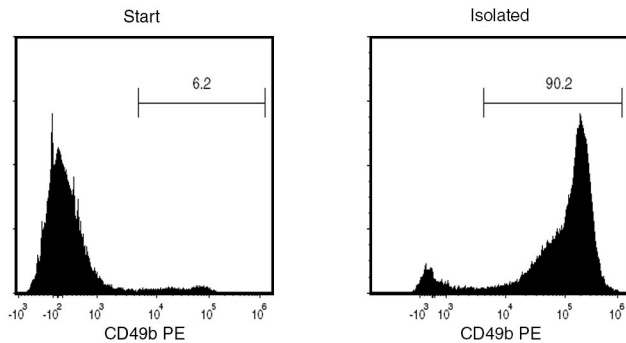


Figure 1. Isolation of CD49b+ Cells from Mouse Splenocytes

Starting with mouse splenocytes, the CD49b+ cell content of the isolated fraction typically ranges from 74 - 90%. In the above example, the purities of the start and final isolated fractions are 6.2% and 90.2%, respectively.

NOTE: For improved purity, perform the additional separation step as described in Table 1.

PRODUCTS ARE FOR RESEARCH USE ONLY AND NOT INTENDED FOR HUMAN OR ANIMAL DIAGNOSTIC OR THERAPEUTIC USES UNLESS OTHERWISE STATED. FOR ADDITIONAL INFORMATION ON QUALITY AT STEMCELL, REFER TO WWW.STEMCELL.COM/COMPLIANCE.

Copyright © 2026 by STEMCELL Technologies Inc. All rights reserved including graphics and images. STEMCELL Technologies & Design, STEMCELL Shield Design, Scientists Helping Scientists, EasySep, RapidSpheres, and RoboSep are trademarks of STEMCELL Technologies Canada Inc. All other trademarks are the property of their respective holders. While STEMCELL has made all reasonable efforts to ensure that the information provided by STEMCELL and its suppliers is correct, it makes no warranties or representations as to the accuracy or completeness of such information.